

**CONSTRUCTION UPDATE: NM 68-US 64 Roadway Project**  
**Construction to Move to Phase 2-B Week of July 26-30, 2021**

*NOTE: All construction is weather permitting and subject to change without notice.*

**[Update as of Thursday, July 15, 2021](#)**

***Construction is scheduled to move to Phase 2-B during the week of July 26-30, 2021. This phase is expected to last through late September 2021. Additional phases will follow, and the project is expected to be completed in late 2022.***

**Traffic Impacts During Phase 2-B:**

Traffic will shift to the left side of Paseo Del Pueblo Sur from the Tewa/Albright intersection north to the Camino de la Placita/Quesnel intersection. One lane of traffic will be open in both directions (northbound and southbound).

Northbound traffic will be able to turn left or right. **Because barricades will be placed on the right side of the road, southbound traffic will not be able to turn left in the construction zone except at designated intersections (Quesnel and Los Pandos Road).**

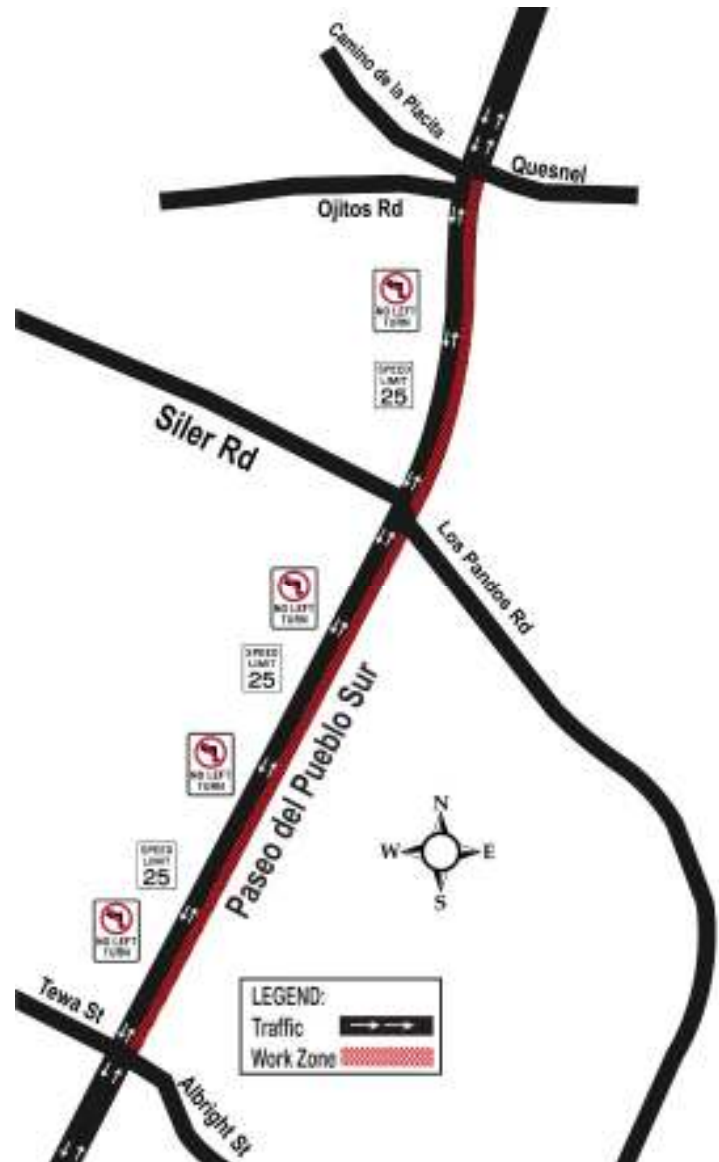
Regular work hours are **7 a.m. to 6:30 p.m., Monday-Friday**, although crews may work longer hours or on weekends as needed.

***Motorists traveling through this area should expect delays and obey the 25-miles-per-hour speed limit.***

**Going on now in Phase 2-A (through week of July 19-23, 2021):**

Crews are working in the center of Paseo Del Pueblo Sur between the Siler Rd/Los Pandos Rd intersection and the Tewa St/Albright St intersection. Traffic has been moved to the outside shoulders with one lane of traffic open in each direction (north and south).

Because barricades are in the center section of the road to protect construction workers, there are **NO left turns** for motorists heading north or south between the Tewa/Albright intersection and the Siler/Los Pandos intersection.



For more information, to ask questions or to sign up for free email updates, visit the project website, **[www.taosnm6864.com](http://www.taosnm6864.com)**, or call Patti Watson at **1-800-687-3417** or **505-269-9691**. Information is also available at **[www.nmroads.com](http://www.nmroads.com)**.